

M2 - 1/4" PULSE METERS

The M2 is one of the small capacity meters in the M Series range and is differentiated by its flow rate capabilities. It has the ability to handle a wide range of fluid viscosities with exceptional levels of repeatability and durability.



M2RSP-IH

Product Benefits

- Very compact size.
- Low flow capability with high resolution output.
- Solid state Hall Effect Sensor or Reed Switch options.
- Has IP54/NEMA13 protection.
- Flexibility of installation options (e.g. can be mounted horizontally or vertically; no flow conditioning required).
- Meter accuracy is verified by a factory calibration check after which an individual metrology report is issued.
- Will handle particle sizes to 0.127mm/0.005".
- Low pressure drop allows for economical pump selection or gravity flow applications.
- Meter design minimises the number of wearable and replaceable parts and extends product life.

			HP. MODEL
MODEL	M2RSP-XY	M2SSP-XY	M2SSPH-XY
METER TYPE	PULSE	PULSE	PULSE
METER BODY MATERIAL	PPS	316 STAINLESS STEEL	316 STAINLESS STEEL
WETTED COMPONENTS: ROTOR MATERIALS SHAFTS O-RING	316 STAINLESS STEEL 316 STAINLESS STEEL VITON	316 STAINLESS STEEL 316 STAINLESS STEEL VITON	316 STAINLESS STEEL 316 STAINLESS STEEL VITON
FLOW RATE RANGES (litres per hour/ US gallons per hour) ABOVE 5 CPS BELOW 5 CPS	15 to 500 / 4 to 132 25 to 500 / 6 to 132	15 to 500 / 4 to 132 25 to 500 / 6 to 132	15 to 500 / 4 to 132 25 to 500 / 6 to 132
ACCURACY- WITHIN (OF READING)	+/- 1%	+/- 1%	+/- 1%
REPEATABILITY	0.03%	0.03%	0.03%
MAXIMUM VISCOSITY	1000 Centipoise	1000 Centipoise	1000 Centipoise
MAXIMUM OPERATING PRESSURE	500kPa/ 75 PSI/ 5 BAR	1000kPa/ 150PSI/ 10BAR	551600kPa/ 8000PSI/ 551BAR
PULSER TYPE	HALL EFFECT SENSOR OR REED SWITCH	HALL EFFECT SENSOR OR REED SWITCH	HALL EFFECT SENSOR
PULSES PER LITRE/ US GALLON	400 / 1514.2	400 / 1514.2	400 / 1514.2
MODEL DIMENSIONS METER BODY PORT FACE TO FACE	50x50mm / 1.97"x1.97" 65mm / 2.58"	50x50mm / 1.97"x1.79" 65mm / 2.58"	86mm dia x 110mm h / 3.4" dia x 4.33" h 83mm / 3.26"
WEIGHT	240g / 8.5oz	600g / 21.2oz	3.3kg / 116.5oz
MAX. OPERATING TEMPERATURE	80°C / 176°F	120°C / 248°F	120°C / 248°F
RECOMMENDED MESH STRAINER SIZE	200 MESH	200 MESH	200 MESH

X-Port Size To order flowmeter you must replace 'X' with the relevant number. This number will determine the following specifications:
Y-Switch Operation (ie: Specify 'H' for Hall Effect or 'R' for Reed Switch)

- | | | |
|------------------------|--------------------------|--|
| 1 = 1/4" BSP (F) ports | Calibrated in litres | 1m/39" pulser fly lead |
| 2 = 1/4" NPT (F) ports | Calibrated in US gallons | 1m/39" pulser fly lead |
| 1 = 1/4" BSP (F) ports | Calibrated in litres | 20mm (F) electric conduit connection |
| 2 = 1/4" NPT (F) ports | Calibrated in US gallons | 1/2" NPT (F) electric conduit connection |

PPS = Polyphenylene Sulfide Resins



M2 - 1/4" PULSE METERS

TYPE M2 - 1/4" PULSE METERS

Weights

MODEL	M2RSP-XY	M2SSP-XY	M2SSPH-XY
WEIGHT	240g / 8.5oz	600g / 21.2oz	3.3kg / 116.5oz

Options & Accessories

M2- 1/4" METER	VITON O-RING	TEFLON O-RING	EPDM O-RING	HIGH TEMP ROTORS	HIGH VISCOSITY ROTORS	HALL EFFECT SENSOR	REED SWITCH	SOLVENT KIT	PPS ROTORS WITH HASTALLOY C SHAFTS	PROTECTIVE BOOT	EXTENDED LIFE BATTERY	REMOTE MOUNTED LC DISPLAY	HEATING JACKET	4-20mA MODULE (REMOTE)
M2RSP-XY	S	O	O	X	X	O	O	X	O	X	X	A	X	A
M2SSP-XY	S	O	O	X	X	O	O	X	X	X	X	A	X	A
M2SSPH-XY	S	O	O	X	X	S	X	X	X	X	X	A	X	A

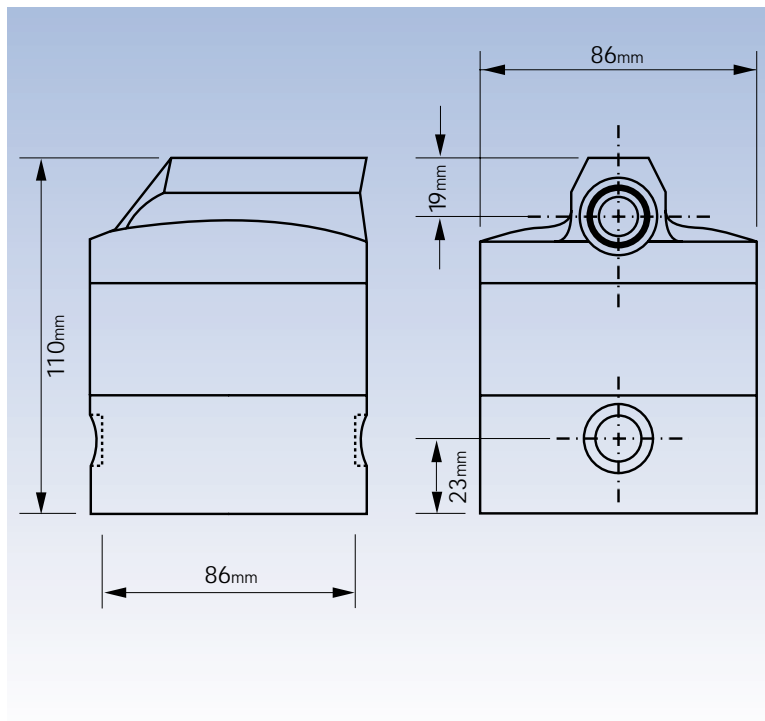
S = Standard

O = Optional

X = Not Available

A = Accessory

Dimensions of high pressure version only model type M2SSPH-X



Standard meter

