

M40 - 1 1/2" PULSE METERS

The M40 is the medium to large capacity meter in the M Series range. It has the ability to handle a wide range of fluid viscosities with exceptional levels of repeatability and durability.



M40ARP-I

Product Benefits

- Compact size.
- Two independent pulse units which can be linked to allow doubling of the pulse output (or in-built spare if used as single).
- Has IP66/NEMA6 protection and Flameproof Certification.
- Flexibility of installation options (e.g. can be mounted horizontally or vertically; no flow conditioning required).
- Low pressure drop allows for economical pump selection or gravity flow applications.
- Meter construction enables fast and easy on-site servicing without removal from application.
- Meter accuracy is verified by a factory calibration check after which an individual metrology report is issued.
- Meter design minimises the number of wearable and replaceable parts and extends product life.
- Will handle particle sizes to 0.38mm/0.015".

STANDARDS AUSTRALIA 

| MODEL | M40ARP-X | M40ASP-X | M40SRP-X | M40SSP-X |
|---|--|--|--|--|
| METER TYPE | PULSE | PULSE | PULSE | PULSE |
| METER BODY MATERIAL | AA601 ALUMINIUM | AA601 ALUMINIUM | 316 STAINLESS STEEL | 316 STAINLESS STEEL |
| WETTED COMPONENTS: | | | | |
| ROTOR MATERIAL | PPS | 316 STAINLESS STEEL | PPS | 316 STAINLESS STEEL |
| SHAFTS | 316 STAINLESS STEEL | 316 STAINLESS STEEL | 316 STAINLESS STEEL | 316 STAINLESS STEEL |
| O-RING | NBR (NITRILE) | NBR (NITRILE) | NBR (NITRILE) | NBR (NITRILE) |
| FLOW RATE RANGES (litres per minute/US gallons per minute) | | | | |
| ABOVE 5 CPS | 10 to 250 / 2.6 to 66 | 10 to 250 / 2.6 to 66 | 10 to 250 / 2.6 to 66 | 10 to 250 / 2.6 to 66 |
| BELOW 5 CPS | 15 to 235 / 4 to 62 | 15 to 235 / 4 to 62 | 15 to 235 / 4 to 62 | 15 to 235 / 4 to 62 |
| ACCURACY- WITHIN (OF READING) | +/- 0.5% | +/- 0.5% | +/- 0.5% | +/- 0.5% |
| REPEATABILITY | 0.03% | 0.03% | 0.03% | 0.03% |
| MAXIMUM VISCOSITY (OF STANDARD MODEL) | 1000 Centipoise | 1000 Centipoise | 1000 Centipoise | 1000 Centipoise |
| MAXIMUM OPERATING PRESSURE | 5500kPa/ 800 PSI/ 55 BAR OR FLANGE RULE WHERE FITTED | | | |
| PULSER TYPE | HALL EFFECT OR REED SWITCH OR COMBINATION HE /RS | HALL EFFECT OR REED SWITCH OR COMBINATION HE /RS | HALL EFFECT OR REED SWITCH OR COMBINATION HE /RS | HALL EFFECT OR REED SWITCH OR COMBINATION HE /RS |
| PULSES PER LITRE/US GALLON | 14.5 OR 29 / 54.9 OR 109.8 | 14.5 OR 29 / 54.9 OR 109.8 | 14.5 OR 29 / 54.9 OR 109.8 | 14.5 OR 29 / 54.9 OR 109.8 |
| MAX. OPERATING TEMPERATURE | 80°C / 176°F | 120°C / 248°F | 80°C / 176°F | 120°C / 248°F |
| RECOMMENDED MESH STRAINER SIZE | 60 MESH | 60 MESH | 60 MESH | 60 MESH |

Port Size To order flowmeter you must replace 'X' with the relevant number. This number will determine the following specifications:

Port Size:

- 1 = 1 1/2" BSP (F) ports
- 2 = 1 1/2" NPT (F) ports
- 3 = 1 1/2" ANSI 150lb Flange
- 4 = 1 1/2" ANSI 150lb Flange
- 5 = 40mm DIN 16 Flange

Electrical Conduit Connection:

- 20mm (F)
- 1/2" NPT (F)
- 20mm (F)
- 1/2" NPT (F)
- 20mm (F)

Calibrated and Display In:

- Litres
- US Gallons
- Litres
- US Gallons
- Litres

PPS = Polyphenylene Sulfide Resins



M40 - 1 1/2" PULSE METERS

TYPE M40 - 1 1/2" PULSE METERS

Weights

| | | | | | |
|---------------|-----------------|-----------------|-----------------|-----------------|-----------------|
| MODEL | M4OARP-1 | M4OARP-2 | M4OARP-3 | M4OARP-4 | M4OARP-5 |
| WEIGHT | 4.5kg/9.9lbs | 4.5kg/9.9lbs | 4.5kg/9.9lbs | 4.5kg/9.9lbs | 4.5kg/9.9lbs |
| MODEL | M4OASP-1 | M4OASP-2 | | | |
| WEIGHT | 4.9kg/10.8lbs | 4.9kg/10.8lbs | | | |
| MODEL | M4OSRP-1 | M4OSRP-2 | M4OSRP-3 | M4OSRP-4 | M4OSRP-5 |
| WEIGHT | 8.5kg/18.7lbs | 8.5kg/18.7lbs | 8.5kg/18.7lbs | 8.5kg/18.7lbs | 8.5kg/18.7lbs |
| MODEL | M4OSSP-1 | M4OSSP-2 | M4OSSP-3 | M4OSSP-4 | M4OSSP-5 |
| WEIGHT | 9.5kg/20.9lbs | 9.5kg/20.9lbs | 9.5kg/20.9lbs | 9.5kg/20.9lbs | 9.5kg/20.9lbs |

Options & Accessories

| M40 - 1 1/2" METER | VITON O-RING | TEFLON O-RING | EPDM O-RING | HIGH TEMP ROTORS | HIGH VISCOSITY ROTORS | HALL EFFECT SENSOR | REED SWITCH | SOLVENT KIT | HASTALLOY C SHAFTS | PROTECTIVE BOOT | EXTENDED LIFE BATTERY | REMOTE MOUNTED LC DISPLAY | HEATING JACKET | 4-20mA MODULE |
|--------------------|--------------|---------------|-------------|------------------|-----------------------|--------------------|-------------|-------------|--------------------|-----------------|-----------------------|---------------------------|----------------|---------------|
| M4OARP-X | O | O | O | O | O | O | S | X | X | X | X | A | A | A |
| M4OASP-X | O | O | O | S | O | O | S | X | X | X | X | A | A | A |
| M4OSRP-X | O | O | O | O | O | O | S | X | X | X | X | A | A | A |
| M4OSSP-X | O | O | O | S | O | O | S | X | X | X | X | A | A | A |

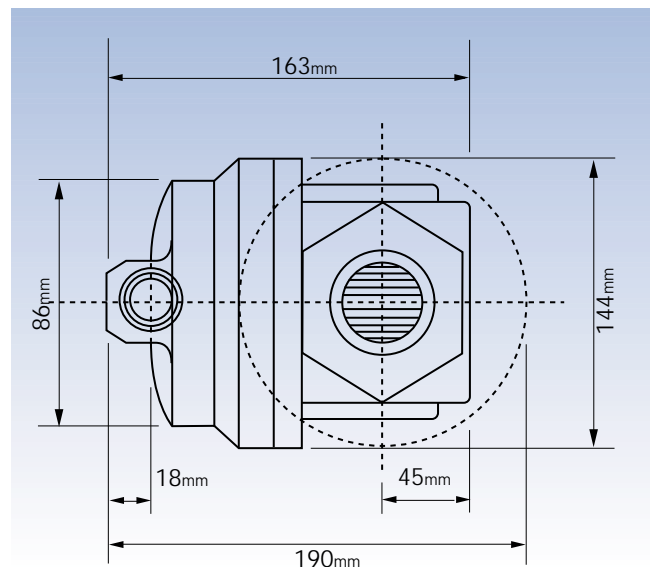
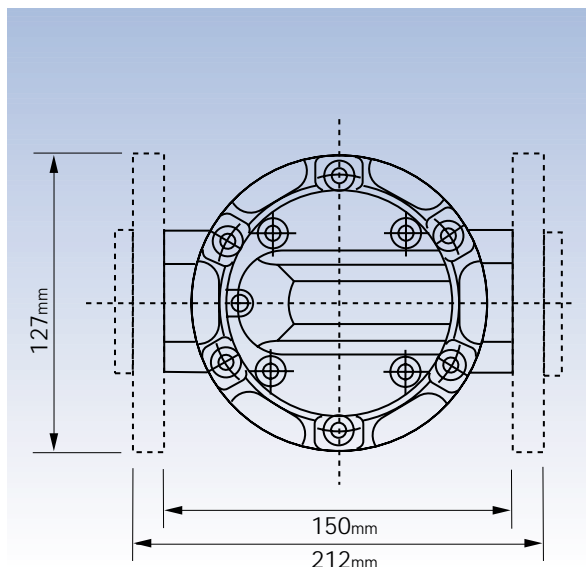
S = Standard

O = Optional

X = Not Available

A = Accessory

Dimensions



M40 - 1 1/2" PULSE METERS WITH STANDARD LC DISPLAY

The M40 is the medium to large capacity meter in the M Series range. It has the ability to handle a wide range of fluid viscosities with exceptional levels of repeatability and durability.



M40ARG-I

Product Benefits

- Compact size.
- Flexibility of installation options (e.g. can be mounted horizontally or vertically; no flow conditioning required).
- Built in auxiliary pulse output available.
- Low pressure drop allows for economical pump selection or gravity flow applications.
- Meter construction enables fast and easy on-site servicing without removal from application.
- Meter accuracy is verified by a factory calibration check after which an individual metrology report is issued.
- Meter design minimises the number of wearable and replaceable parts and extends product life.
- LC Display meets European CE directive.
- Has IP54/NEMA13 protection.
- Will handle particle sizes to 0.38mm/0.015".

| MODEL | M40ARG-X | M40ASG-X | M40SRG-X | M40SSG-X |
|---|--|------------------------------------|------------------------------------|------------------------------------|
| METER TYPE | PULSE WITH STANDARD LC DISPLAY | PULSE WITH STANDARD LC DISPLAY | PULSE WITH STANDARD LC DISPLAY | PULSE WITH STANDARD LC DISPLAY |
| METER BODY MATERIAL | AA601 ALUMINIUM | AA601 ALUMINIUM | 316 STAINLESS STEEL | 316 STAINLESS STEEL |
| WETTED COMPONENTS: | | | | |
| ROTOR MATERIAL | PPS | 316 STAINLESS STEEL | PPS | 316 STAINLESS STEEL |
| SHAFTS | 316 STAINLESS STEEL | 316 STAINLESS STEEL | 316 STAINLESS STEEL | 316 STAINLESS STEEL |
| O-RING | NBR (NITRILE) | NBR (NITRILE) | NBR (NITRILE) | NBR (NITRILE) |
| FLOW RATE RANGES (litres per minute/US gallons per minute) | | | | |
| ABOVE 5 CPS | 10 to 250 / 2.6 to 66 | 10 to 250 / 2.6 to 66 | 10 to 250 / 2.6 to 66 | 10 to 250 / 2.6 to 66 |
| BELOW 5 CPS | 15 to 235 / 4 to 62 | 15 to 235 / 4 to 62 | 15 to 235 / 4 to 62 | 15 to 235 / 4 to 62 |
| ACCURACY- WITHIN (OF READING) | +/- 0.5% | +/- 0.5% | +/- 0.5% | +/- 0.5% |
| REPEATABILITY | 0.03% | 0.03% | 0.03% | 0.03% |
| MAXIMUM VISCOSITY (OF STANDARD MODEL) | 1000 Centipoise | 1000 Centipoise | 1000 Centipoise | 1000 Centipoise |
| MAXIMUM OPERATING PRESSURE | 5500kPa/ 800 PSI/ 55 BAR OR FLANGE RULE WHERE FITTED | | | |
| PULSER TYPE | REED SWITCH OR COMBINATION HE / RS | REED SWITCH OR COMBINATION HE / RS | REED SWITCH OR COMBINATION HE / RS | REED SWITCH OR COMBINATION HE / RS |
| PULSES PER LITRE/US GALLON | 14.5 / 54.9 | 14.5 / 54.9 | 14.5 / 54.9 | 14.5 / 54.9 |
| MAX. OPERATING TEMPERATURE | 80°C / 176°F | 120°C / 248°F | 80°C / 176°F | 120°C / 248°F |
| RECOMMENDED MESH STRAINER SIZE | 60 MESH | 60 MESH | 60 MESH | 60 MESH |

Port Size To order flowmeter you must replace 'X' with the relevant number. This number will determine the following specifications:

Port Size:

- 1 = 1 1/2" BSP (F) ports
- 2 = 1 1/2" NPT (F) ports
- 3 = 1 1/2" ANSI 150lb Flange
- 4 = 1 1/2" ANSI 150lb Flange
- 5 = 40mm DIN 16 Flange

Calibrated and Display In:

- Litres
- US Gallons
- Litres
- US Gallons
- Litres

PPS = Polyphenylene Sulfide Resins



M40 - 1 1/2" PULSE METERS WITH STANDARD LC DISPLAY

TYPE M40 - 1 1/2" PULSE METERS

Weights

| | | | | | |
|---------------|-----------------|-----------------|-----------------|-----------------|-----------------|
| MODEL | M40ARG-1 | M40ARG-2 | M40ARG-3 | M40ARG-4 | M40ARG-5 |
| WEIGHT | 4.5kg/9.9lbs | 4.5kg/9.9lbs | 4.5kg/9.9lbs | 4.5kg/9.9lbs | 4.5kg/9.9lbs |
| MODEL | M40ASG-1 | M40ASG-2 | | | |
| WEIGHT | 4.9kg/10.8lbs | 4.9kg/10.8lbs | | | |
| MODEL | M40SRG-1 | M40SRG-2 | M40SRG-3 | M40SRG-4 | M40SRG-5 |
| WEIGHT | 8.5kg/18.7lbs | 8.5kg/18.7lbs | 8.5kg/18.7lbs | 8.5kg/18.7lbs | 8.5kg/18.7lbs |
| MODEL | M40SSG-1 | M40SSG-2 | M40SSG-3 | M40SSG-4 | M40SSG-5 |
| WEIGHT | 9.5kg/20.9lbs | 9.5kg/20.9lbs | 9.5kg/20.9lbs | 9.5kg/20.9lbs | 9.5kg/20.9lbs |

Options & Accessories

| M40 - 1 1/2" METER STD LC DISPLAY | VITON O-RING | TEFLON O-RING | EPDM O-RING | HIGH TEMP ROTORS | HIGH VISCOSITY ROTORS | HALL EFFECT SENSOR | REED SWITCH | SOLVENT KIT | HASTALLOY C SHAFTS | PROTECTIVE BOOT | EXTENDED LIFE BATTERY | REMOTE MOUNTED LC DISPLAY | HEATING JACKET | 40-20mA MODULE |
|---|--------------|---------------|-------------|------------------|-----------------------|--------------------|-------------|-------------|--------------------|-----------------|-----------------------|---------------------------|----------------|----------------|
| M40ARG-X | O | O | O | O | O | O | S | X | X | X | X | A | A | A |
| M40ASG-X | O | O | O | S | O | O | S | X | X | X | X | A | A | A |
| M40SRG-X | O | O | O | O | O | O | S | X | X | X | X | A | A | A |
| M40SSG-X | O | O | O | S | O | O | S | X | X | X | X | A | A | A |

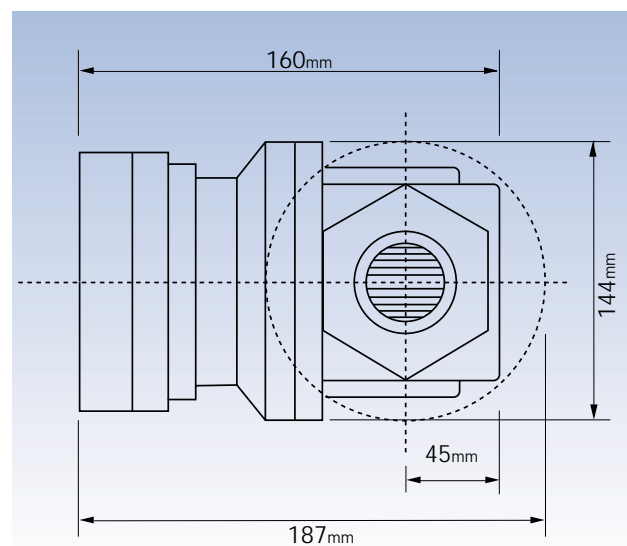
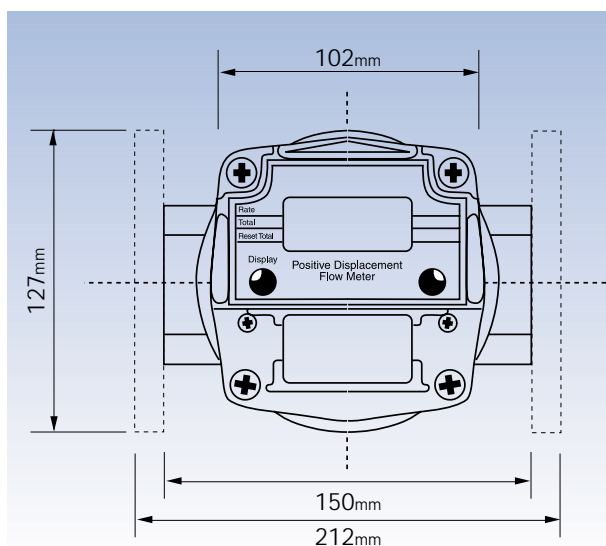
S = Standard

O = Optional

X = Not Available

A = Accessory

Dimensions



M40 - 1 1/2" PULSE METERS WITH DELUXE LC DISPLAY

The M40 is the medium to large capacity meter in the M Series range. It has the ability to handle a wide range of fluid viscosities with exceptional levels of repeatability and durability.



M40ARE-3

Product Benefits

- Compact size.
- Flexibility of installation options (e.g. can be mounted horizontally or vertically; no flow conditioning required).
- Low pressure drop allows for economical pump selection or gravity flow applications.
- Meter construction enables fast and easy on-site servicing without removal from application.
- Meter accuracy is verified by a factory calibration check after which an individual metrology report is issued.
- Will handle particle sizes to 0.38mm/0.015".
- LC Display meets European CE directive.
- Built in auxiliary pulse output available.
- Meter design minimises the number of wearable and replaceable parts and extends product life.
- Intrinsically safe LC Display. Certificate of conformity number PTB Nr. Ex-93.C.4033x.
- Has IP54/NEMA13 protection.

| MODEL | M40ARE-X | M40ASE-X | M40SRE-X | M40SSE-X |
|---|--|------------------------------------|------------------------------------|------------------------------------|
| METER TYPE | PULSE WITH DELUXE LC DISPLAY | PULSE WITH DELUXE LC DISPLAY | PULSE WITH DELUXE LC DISPLAY | PULSE WITH DELUXE LC DISPLAY |
| METER BODY MATERIAL | AA601 ALUMINIUM | AA601 ALUMINIUM | 316 STAINLESS STEEL | 316 STAINLESS STEEL |
| WETTED COMPONENTS: | | | | |
| ROTOR MATERIAL | PPS | 316 STAINLESS STEEL | PPS | 316 STAINLESS STEEL |
| SHAFTS | 316 STAINLESS STEEL | 316 STAINLESS STEEL | 316 STAINLESS STEEL | 316 STAINLESS STEEL |
| O-RING | NBR (NITRILE) | NBR (NITRILE) | NBR (NITRILE) | NBR (NITRILE) |
| FLOW RATE RANGES (litres per minute/US gallons per minute) | | | | |
| ABOVE 5 CPS | 10 to 250 / 2.6 to 66 | 10 to 250 / 2.6 to 66 | 10 to 250 / 2.6 to 66 | 10 to 250 / 2.6 to 66 |
| BELOW 5 CPS | 15 to 235 / 4 to 62 | 15 to 235 / 4 to 62 | 15 to 235 / 4 to 62 | 15 to 235 / 4 to 62 |
| ACCURACY- WITHIN (OF READING) | +/- 0.5% | +/- 0.5% | +/- 0.5% | +/- 0.5% |
| REPEATABILITY | 0.03% | 0.03% | 0.03% | 0.03% |
| MAXIMUM VISCOSITY (OF STANDARD MODEL) | 1000 Centipoise | 1000 Centipoise | 1000 Centipoise | 1000 Centipoise |
| MAXIMUM OPERATING PRESSURE | 5500kPa/ 800 PSI/ 55 BAR OR FLANGE RULE WHERE FITTED | | | |
| PULSER TYPE | REED SWITCH OR COMBINATION HE / RS | REED SWITCH OR COMBINATION HE / RS | REED SWITCH OR COMBINATION HE / RS | REED SWITCH OR COMBINATION HE / RS |
| PULSES PER LITRE/US GALLON | 14.5 / 54.9 | 14.5 / 54.9 | 14.5 / 54.9 | 14.5 / 54.9 |
| MAX. OPERATING TEMPERATURE | 80°C / 176°F | 120°C / 248°F | 80°C / 176°F | 120°C / 248°F |
| RECOMMENDED MESH STRAINER SIZE | 60 MESH | 60 MESH | 60 MESH | 60 MESH |

Port Size To order flowmeter you must replace 'X' with the relevant number. This number will determine the following specifications:

Port Size:

- 1 = 1 1/2" BSP (F) ports
- 2 = 1 1/2" NPT (F) ports
- 3 = 1 1/2" ANSI 150lb Flange
- 4 = 1 1/2" ANSI 150lb Flange
- 5 = 40mm DIN 16 Flange

Calibrated and Display In:

- Litres
- US Gallons
- Litres
- US Gallons
- Litres

PPS = Polyphenylene Sulfide Resins



M40 - 1 1/2" PULSE METERS WITH DELUXE LC DISPLAY

TYPE M40 - 1 1/2" PULSE METERS

Weights

| | | | | | |
|---------------|-----------------|-----------------|-----------------|-----------------|-----------------|
| MODEL | M40ARE-1 | M40ARE-2 | M40ARE-3 | M40ARE-4 | M40ARE-5 |
| WEIGHT | 4.5kg/9.9lbs | 4.5kg/9.9lbs | 4.5kg/9.9lbs | 4.5kg/9.9lbs | 4.5kg/9.9lbs |
| MODEL | M40ASE-1 | M40ASE-2 | | | |
| WEIGHT | 4.9kg/10.8lbs | 4.9kg/10.8lbs | | | |
| MODEL | M40SRE-1 | M40SRE-2 | M40SRE-3 | M40SRE-4 | M40SRE-5 |
| WEIGHT | 8.5kg/18.7lbs | 8.5kg/18.7lbs | 8.5kg/18.7lbs | 8.5kg/18.7lbs | 8.5kg/18.7lbs |
| MODEL | M40SSE-1 | M40SSE-2 | M40SSE-3 | M40SSE-4 | M40SSE-5 |
| WEIGHT | 9.5kg/20.9lbs | 9.5kg/20.9lbs | 9.5kg/20.9lbs | 9.5kg/20.9lbs | 9.5kg/20.9lbs |

Options & Accessories

| M40 - 1 1/2" METER DLX LC DISPLAY | VITON O-RING | TEFLON O-RING | EPDM O-RING | HIGH TEMP ROTORS | HIGH VISCOSITY ROTORS | HALL EFFECT SENSOR | REED SWITCH | SOLVENT KIT | HASTALLOY C SHAFTS | PROTECTIVE BOOT | EXTENDED LIFE BATTERY | REMOTE MOUNTED LC DISPLAY | HEATING JACKET | 4-20mA MODULE |
|-----------------------------------|--------------|---------------|-------------|------------------|-----------------------|--------------------|-------------|-------------|--------------------|-----------------|-----------------------|---------------------------|----------------|---------------|
| M40ARE-X | O | O | O | O | O | O | S | X | X | A | A | A | A | A |
| M40ASE-X | O | O | O | O | S | O | S | X | X | A | A | A | A | A |
| M40SRE-X | O | O | O | O | O | O | S | X | X | A | A | A | A | A |
| M40SSE-X | O | O | O | O | S | O | S | X | X | A | A | A | A | A |

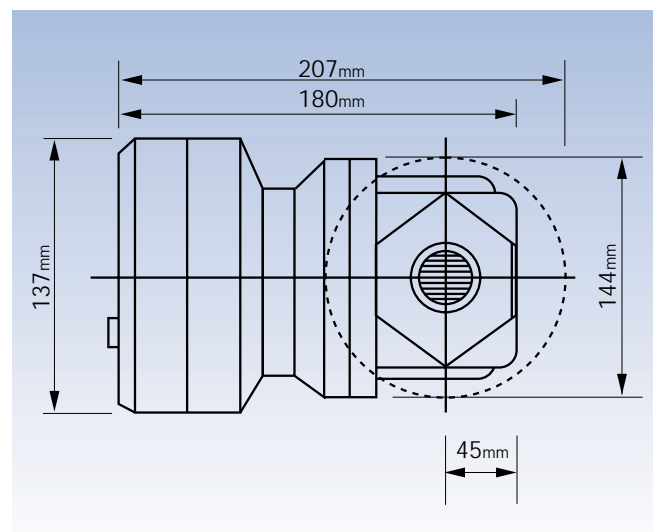
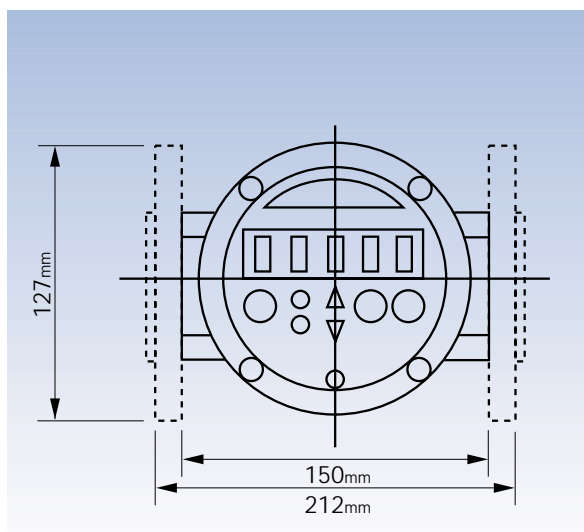
S = Standard

O = Optional

X = Not Available

A = Accessory

Dimensions



M40 - 1 1/2" METERS WITH MECHANICAL DISPLAY

The M40 is the medium to large capacity meter in the M Series range. It has the ability to handle a wide range of fluid viscosities with exceptional levels of repeatability and durability.



M40SRM-H

Product Benefits

- Compact size.
- Easy to read and operate mechanical display.
- Flexibility of installation options (e.g. can be mounted horizontally or vertically; no flow conditioning required).
- Low pressure drop allows for economical pump selection or gravity flow applications.
- Meter construction enables fast and easy on-site servicing without removal from application.
- Meter accuracy is verified by a factory calibration check after which an individual metrology report is issued.
- Meter design minimises the number of wearable and replaceable parts and extends product life.
- Will handle particle sizes to 0.38mm/0.015".

| MODEL | M40ARM-X | M40ASM-X | M40SRM-X | M40SSM-X |
|---|--|-------------------------------|-------------------------------|-------------------------------|
| METER TYPE | METER WITH MECHANICAL DISPLAY | METER WITH MECHANICAL DISPLAY | METER WITH MECHANICAL DISPLAY | METER WITH MECHANICAL DISPLAY |
| METER BODY MATERIAL | AA601 ALUMINIUM | AA601 ALUMINIUM | 316 STAINLESS STEEL | 316 STAINLESS STEEL |
| WETTED COMPONENTS: | | | | |
| ROTOR MATERIAL | PPS | 316 STAINLESS STEEL | PPS | 316 STAINLESS STEEL |
| SHAFTS | 316 STAINLESS STEEL | 316 STAINLESS STEEL | 316 STAINLESS STEEL | 316 STAINLESS STEEL |
| O-RING | NBR (NITRILE) | NBR (NITRILE) | NBR (NITRILE) | NBR (NITRILE) |
| FLOW RATE RANGES (litres per minute/US gallons per minute) | | | | |
| ABOVE 5 CPS | 10 to 250 / 2.6 to 66 | 10 to 250 / 2.6 to 66 | 10 to 250 / 2.6 to 66 | 10 to 250 / 2.6 to 66 |
| BELOW 5 CPS | 15 to 235 / 4 to 62 | 15 to 235 / 4 to 62 | 15 to 235 / 4 to 62 | 15 to 235 / 4 to 62 |
| ACCURACY- WITHIN (OF READING) | +/- 1% | +/- 1% | +/- 1% | +/- 1% |
| REPEATABILITY | 0.03% | 0.03% | 0.03% | 0.03% |
| MAXIMUM VISCOSITY (OF STANDARD MODEL) | 1000 Centipoise | 1000 Centipoise | 1000 Centipoise | 1000 Centipoise |
| MAXIMUM OPERATING PRESSURE | 3450kPa/ 500 PSI/ 34.5 BAR OR FLANGE RULE WHERE FITTED | | | |
| MAX. OPERATING TEMPERATURE | 80°C / 176°F | 120°C / 248°F | 80°C / 176°F | 120°C / 248°F |
| RECOMMENDED MESH STRAINER SIZE | 60 MESH | 60 MESH | 60 MESH | 60 MESH |

Port Size To order flowmeter you must replace 'X' with the relevant number. This number will determine the following specifications:

Port Size:

- 1 = 1 1/2" BSP (F) ports
- 2 = 1 1/2" NPT (F) ports
- 3 = 1 1/2" ANSI 150lb Flange
- 4 = 1 1/2" ANSI 150lb Flange
- 5 = 40mm DIN 16 Flange

Calibrated and Display In:

- Litres
- US Gallons
- Litres
- US Gallons
- Litres

PPS = Polyphenylene Sulfide Resins



M40 - 1 1/2" METERS WITH MECHANICAL DISPLAY

TYPE M40 - 1 1/2" METERS

Weights

| | | | | | |
|---------------|-----------------|-----------------|-----------------|-----------------|-----------------|
| MODEL | M4OARM-1 | M4OARM-2 | M4OARM-3 | M4OARM-4 | M4OARM-5 |
| WEIGHT | 4.5kg/9.9lbs | 4.5kg/9.9lbs | 4.5kg/9.9lbs | 4.5kg/9.9lbs | 4.5kg/9.9lbs |
| MODEL | M4OASM-1 | M4OASM-2 | | | |
| WEIGHT | 4.9kg/10.8lbs | 4.9kg/10.8lbs | | | |
| MODEL | M4OSRM-1 | M4OSRM-2 | M4OSRM-3 | M4OSRM-4 | M4OSRM-5 |
| WEIGHT | 8.5kg/18.7lbs | 8.5kg/18.7lbs | 8.5kg/18.7lbs | 8.5kg/18.7lbs | 8.5kg/18.7lbs |
| MODEL | M4OSSM-1 | M4OSSM-2 | M4OSSM-3 | M4OSSM-4 | M4OSSM-5 |
| WEIGHT | 9.5kg/20.9lbs | 9.5kg/20.9lbs | 9.5kg/20.9lbs | 9.5kg/20.9lbs | 9.5kg/20.9lbs |

Options & Accessories

| M40 - 1 1/2" MECHANICAL DISPLAY | VITON O-RING | TEFLON O-RING | EPDM O-RING | HIGH TEMP ROTORS | HIGH VISCOSITY ROTORS | HALL EFFECT SENSOR | REED SWITCH | SOLVENT KIT | HASTALLOY C SHAFTS | PROTECTIVE BOOT | EXTENDED LIFE BATTERY | REMOTE MOUNTED LC DISPLAY | HEATING JACKET | 4-20mA MODULE |
|---------------------------------|--------------|---------------|-------------|------------------|-----------------------|--------------------|-------------|-------------|--------------------|-----------------|-----------------------|---------------------------|----------------|---------------|
| M4OARM-X | O | O | O | O | O | X | X | O | X | X | X | X | A | X |
| M4OASM-X | O | O | O | S | O | X | X | O | X | X | X | X | A | X |
| M4OSRM-X | O | O | O | O | O | X | X | S | X | X | X | X | A | X |
| M4OSSM-X | O | O | O | S | O | X | X | S | X | X | X | X | A | X |

S = Standard

O = Optional

X = Not Available

A = Accessory

Dimensions

